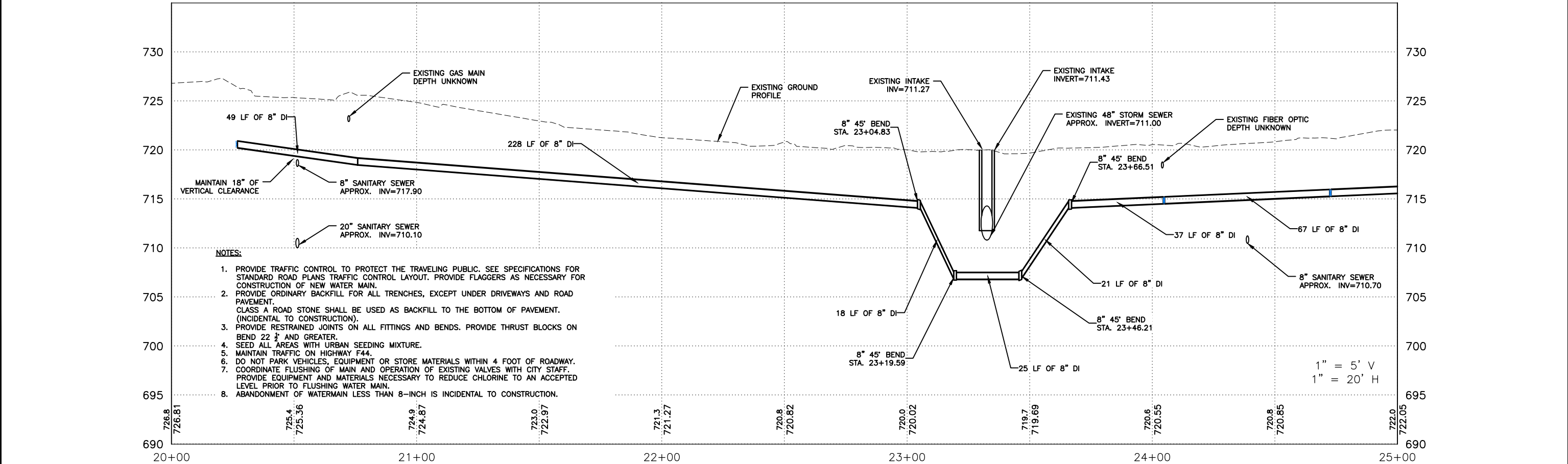
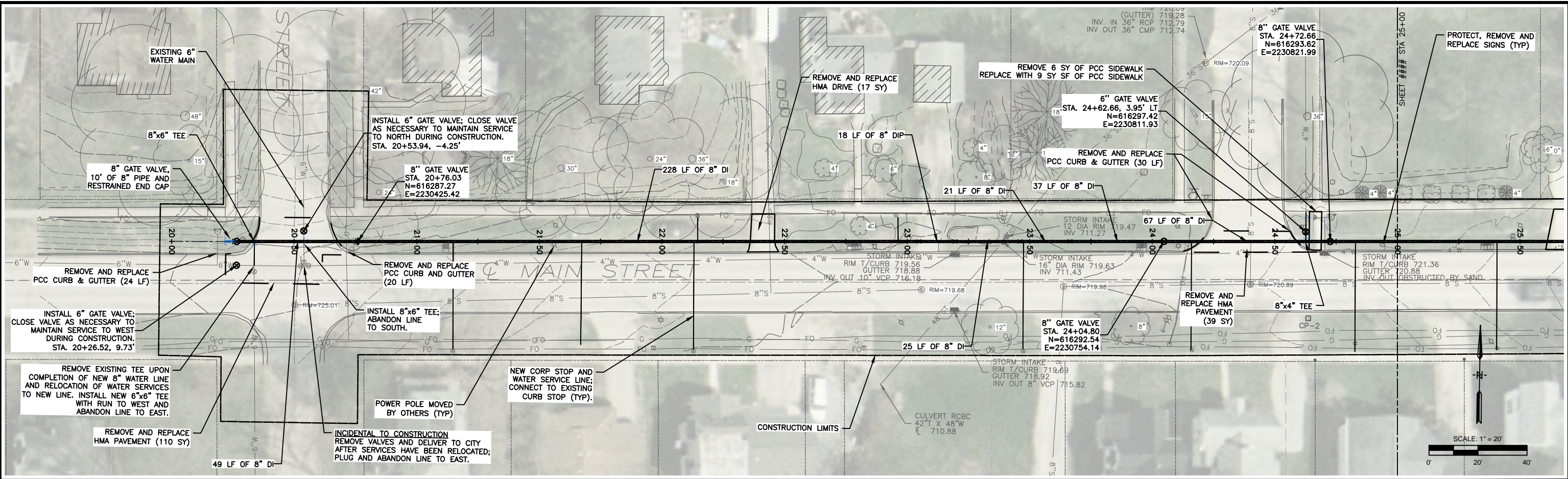


PLOTTED: Tuesday, January 26, 2016 11:21:18 AM



DATE	REVISIONS	SCALE	AS NOTED
		DRAWN	JAL
		CHECKED	BJP
		APPROVED	DRS
		DATE	08-28-2015
		ISSUED FOR	REVIEW

VERIFY SCALE
BAR IS ONE INCH ON ORIGINAL DRAWING. 1" = 1'
IF NOT ONE INCH ON THIS SHEET, ADJUST SCALES ACCORDINGLY.



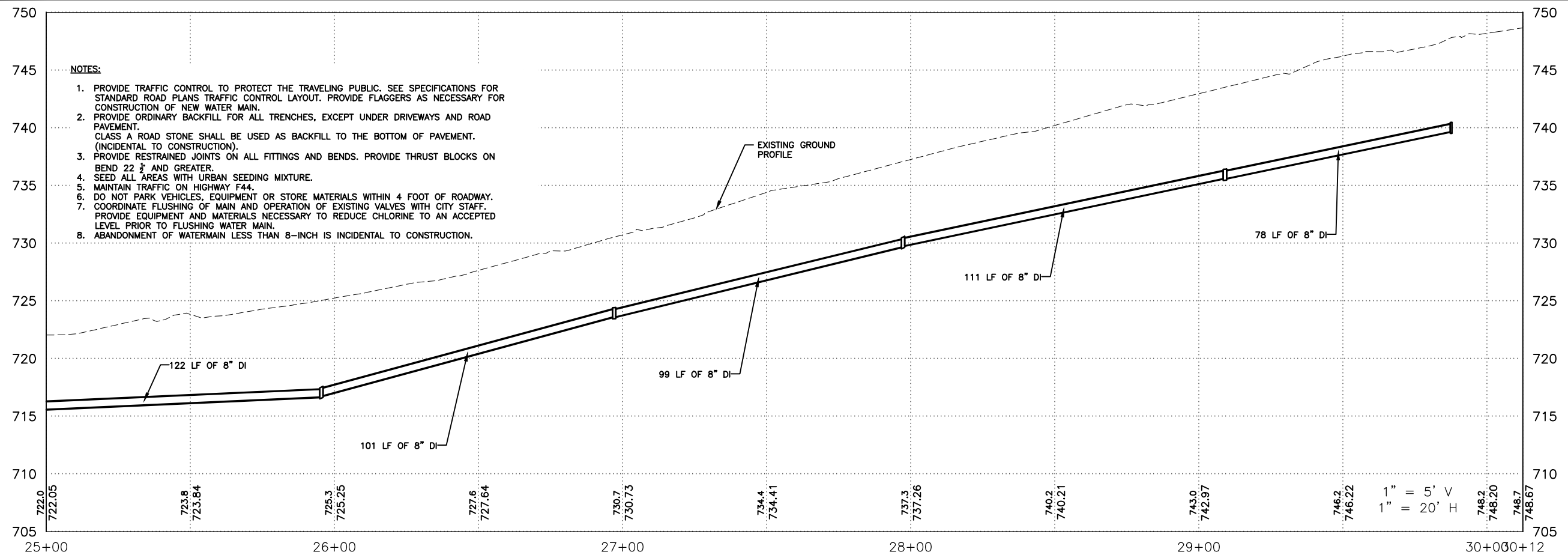
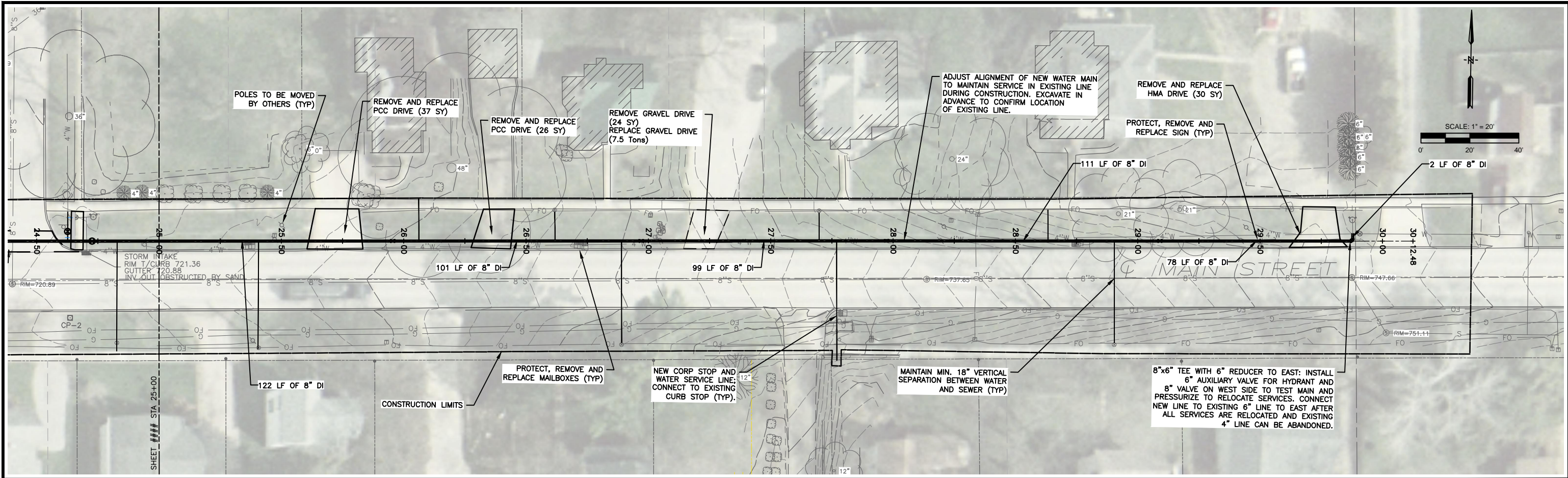
**MAIN STREET WATER MAIN IMPROVEMENTS
WEST BRANCH**

860 22nd Avenue • Suite 4 • Coraville, Iowa 52241-1565
319-466-1000 • 319-466-1008(FAX) • 888-241-8001(WATS)

DWG. NO.
5
PROJECT 368167/2

X-REFS: Main Street Watermain Topo & Aerial
FILE PATH: Z:\WEST BRANCH 368167 MAIN STREET AND WATER STREET WATER MAIN IMPROVEMENTS\DRAWINGS\PRODUCTION DRAWINGS\368167 DESIGN

PLOTTED: Tuesday, January 26, 2016 11:21:27 AM



X-REFS: Main Street Watermain Topo & Aerial
FILE PATH: Z:\WEST BRANCH 368167 MAIN STREET AND WATER STREET WATER MAIN IMPROVEMENTS\DRAWINGS\PRODUCTION DRAWINGS\368167 DESIGN

DATE	REVISIONS	SCALE	AS NOTED
		DRAWN	JAL
		CHECKED	BJP
		APPROVED	DRS
		DATE	08-28-2015
		ISSUED FOR	REVIEW

VERIFY SCALE
BAR IS ONE INCH ON ORIGINAL DRAWING.
IF NOT ONE INCH ON THIS SHEET, ADJUST SCALES ACCORDINGLY.



MAIN STREET WATER MAIN IMPROVEMENTS
WEST BRANCH

860 22nd Avenue • Suite 4 • Coraville, Iowa 52241-1565
319-466-1000 • 319-466-1008(FAX) • 888-241-8001(WATS)

MAIN STREET PLAN AND PROFILE

DWG. NO.
6
PROJECT 368167/2