

City of West Branch

~ A Heritage for Success ~

110 N. Poplar St. • P.O. Box 218 • West Branch, Iowa 52358
Ph. 319-643-5888 • Fax 319-643-2305 • www.westbranchiowa.org • wbcity@lcom.net

CITY COUNCIL WORK SESSION
Tuesday, January 17, 2012 • 6:00 p.m.
City Council Chambers, 110 North Poplar Street

1. Call to order
2. Roll call
3. City Engineer Dave Schechinger, P.E. – Sidewalk Project Alternatives
4. Adjourn

Mayor: Don Kessler • **Council Members:** Jordan M. Ellyson, Colton Miller, Jim Oaks, Dan O'Neil, Mark Worrell
City Administrator/Clerk: Matt Muckler • **Fire Chief:** Kevin Stoolman • **Library Director:** Nick Shimmin
Parks & Rec Director: Melissa Russell • **Police Chief:** Mike Horihan • **Public Works Director:** Matt Goodale



Iowa Safe Routes to School Infrastructure Project Cost Estimate

(Local funds and in-kind donations are not required.)

Item	Quantity	Unit	Unit Price	Requested SRTS Funds +	Committed Local Funds +	Value of Donated Goods or Services (in-kind) =	Total Cost
Preliminary Engineering							
Design	1	LS	31,700	31,700			31,700
Construction Engineering							
On site construction engineering	1	LS	10,300	10,300			10,300
Project Construction							
Bridge	1	LS	80,000	80,000			80,000
4" sidewalk, 4' width	1,600	SY	25	40,000			40,000
6" sidewalk, 10' width	500	SY	30	15,000			15,000
Grading	3500	CY	5	17,500			17,500
Retaining wall	400	SF	20	8,000			8,000
Misc/Cont (25%)	1	LS	40,000	35,000	500		40,000
Signs							
Pavement Marking							
Tree Removal							
Sod/Seeding							
Mobilization							
Traffic Control							
Other							
Land Acquisitions							
Right of way	1	LS	8,000	8,000			8,000
Education/Encouragement/Enforcement Expenses							

TOTALS				250,000	500	0	250,500

Indirect costs (overhead) will not be reimbursed. Indirect costs are those that are incurred for common or joint objectives and therefore cannot be identified readily and specifically with a particular project, but contribute to the ability of the applicant to support the program. Examples of indirect costs include, but are not limited to, depreciation and use allowances, general administration and general overhead, project administration expenses, operation and maintenance expenses, etc.

Allowances for contingency funding are not eligible. Any cost overruns are the responsibility of the applicant.

Iowa Safe Routes to School Infrastructure Project Cost Estimate - Itemized by Project

	Quantity	Unit	Unit Price	Requested SRTS Funds	Committed local funds	Value of donated goods/services	Total Cost
COLLEGE STREET BRIDGE							
4" Sidewalk, 4' Width	240	SY	25	6000			6000
Bridge (10' x 50')	1	LS	80000	80000			80000
Grading	500	CY	5	2500			2500
Miscellaneous/Cont. (25%) - Signs, Pavement Marking, Tree Removal, Sod/Seeding, Mobilization, Traffic Control, Other	1	LS	22000	22000			22000
Right-Of-Way (4,000 sf)	1	LS	8000	8000			8000
Design	1	LS	18000	18000			18000
Construction Engineering	1	LS	6000	6000			6000
Total Cost				142500			142500
GREENVIEW CONNECTION							
6" Sidewalk, 10' Width	500	SY	30	15000			15000
Grading	1000	CY	5	5000			5000
Miscellaneous/Cont. (25%) - Signs, Pavement Marking, Tree Removal, Sod/Seeding, Mobilization, Traffic Control, Other	1	LS	5000	5000			5000
Right-Of-Way	1	LS	0	0			0
Design	1	LS	3800	3800			3800
Construction Engineering	1	LS	1200	1200			1200
Total Cost				30000			30000
OLIPHANT STREET SIDEWALK							
4" Sidewalk, 4' Width	950	SY	25	23750			23750
Retaining Wall	400	SF	20	8000			8000
Grading	1000	CY	5	5000			5000
Miscellaneous/Cont. (25%) - Signs, Pavement Marking, Tree Removal, Sod/Seeding, Mobilization, Traffic Control, Other	1	LS	9200	9200			9200
Right-Of-Way	1	LS	0	0			0
Design	1	LS	7000	7000			7000
Construction Engineering	1	LS	2200	2200			2200
Total Cost				55150			55150
POPLAR STREET IMPROVEMENTS							
4" Sidewalk, 4' Width	250	SY	25	6250			6250
Grading	500	CY	5	2500			2500
Miscellaneous/Cont. (25%) - Signs, Pavement Marking, Tree Removal, Sod/Seeding, Mobilization, Traffic Control, Other	1	LS	2200	1700	500		2200
Right-Of-Way	1	LS	0	0			0
Design	1	LS	1700	1700			1700
Construction Engineering	1	LS	500	500			500
Total Cost				12650			13150
ORANGE STREET IMPROVEMENTS							
4" Sidewalk, 4' Width	160	SY	25	4000			4000
Grading	500	CY	5	2500			2500
Miscellaneous/Cont. (25%) - Signs, Pavement Marking, Tree Removal, Sod/Seeding, Mobilization, Traffic Control, Other	1	LS	1600	1600			1600
Right-Of-Way	1	LS	0	0			0
Design	1	LS	1200	1200			1200
Construction Engineering	1	LS	400	400			400
Total Cost				9700			9700
GRAND TOTAL				250000	500		250500

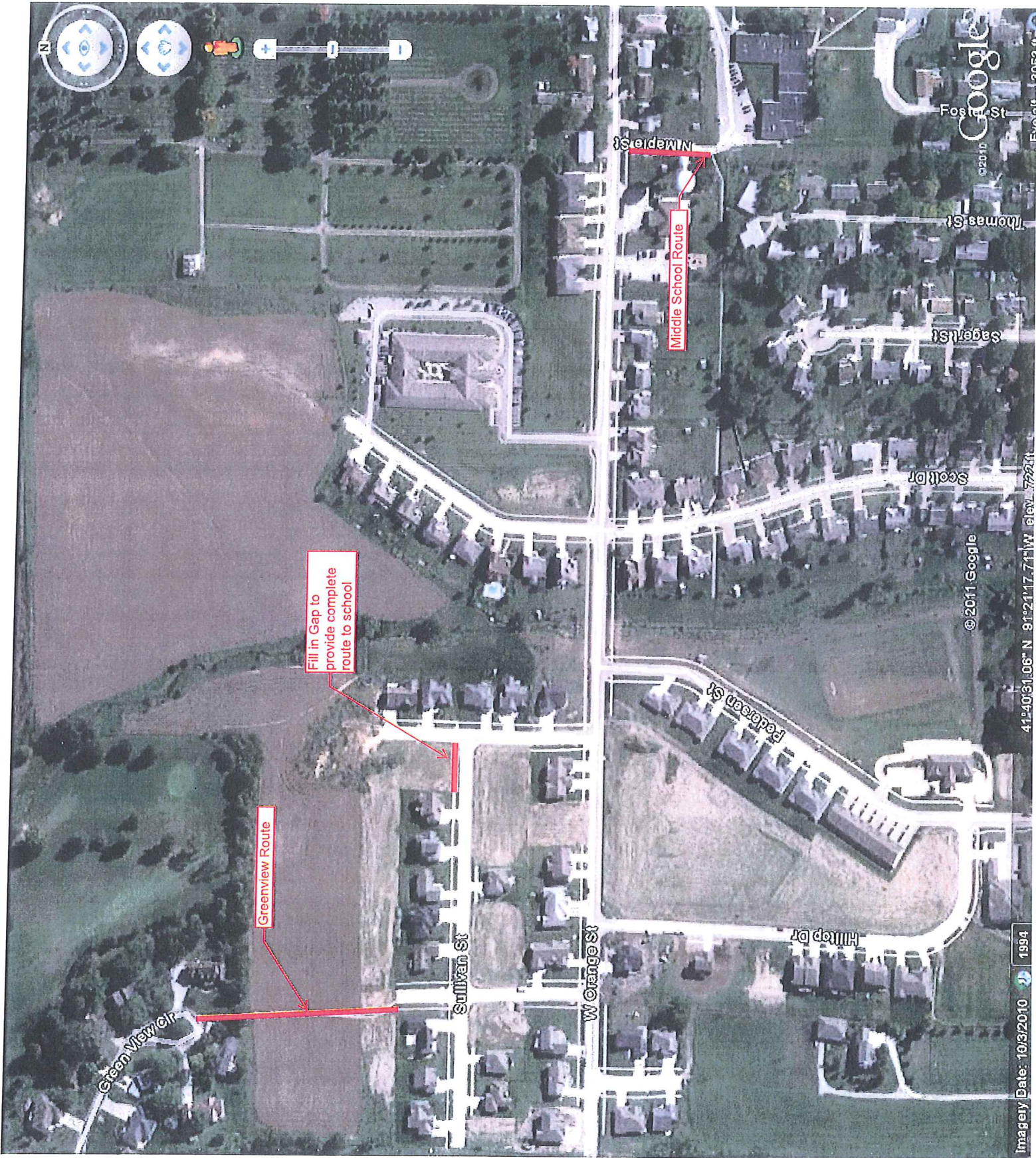
Priority Routes – Option # 3

Proposed by Councilperson O’Neil

Phase 1 (\$48,545.79)

Included Routes:

- Poplar St. – Identical to SRTS
- Orange St. (water tower) – Identical to SRTS
- Oliphant St. (Orange to Crestview)
- In-House Improvements on Existing College Street Bridge



Google

© 2011 Google

Imagery Date: 10/3/2010 1994

41°40'51.06" N 81°21'17.71" W elev. 772ft

Poplar Street Route

West Branch, IA 52338

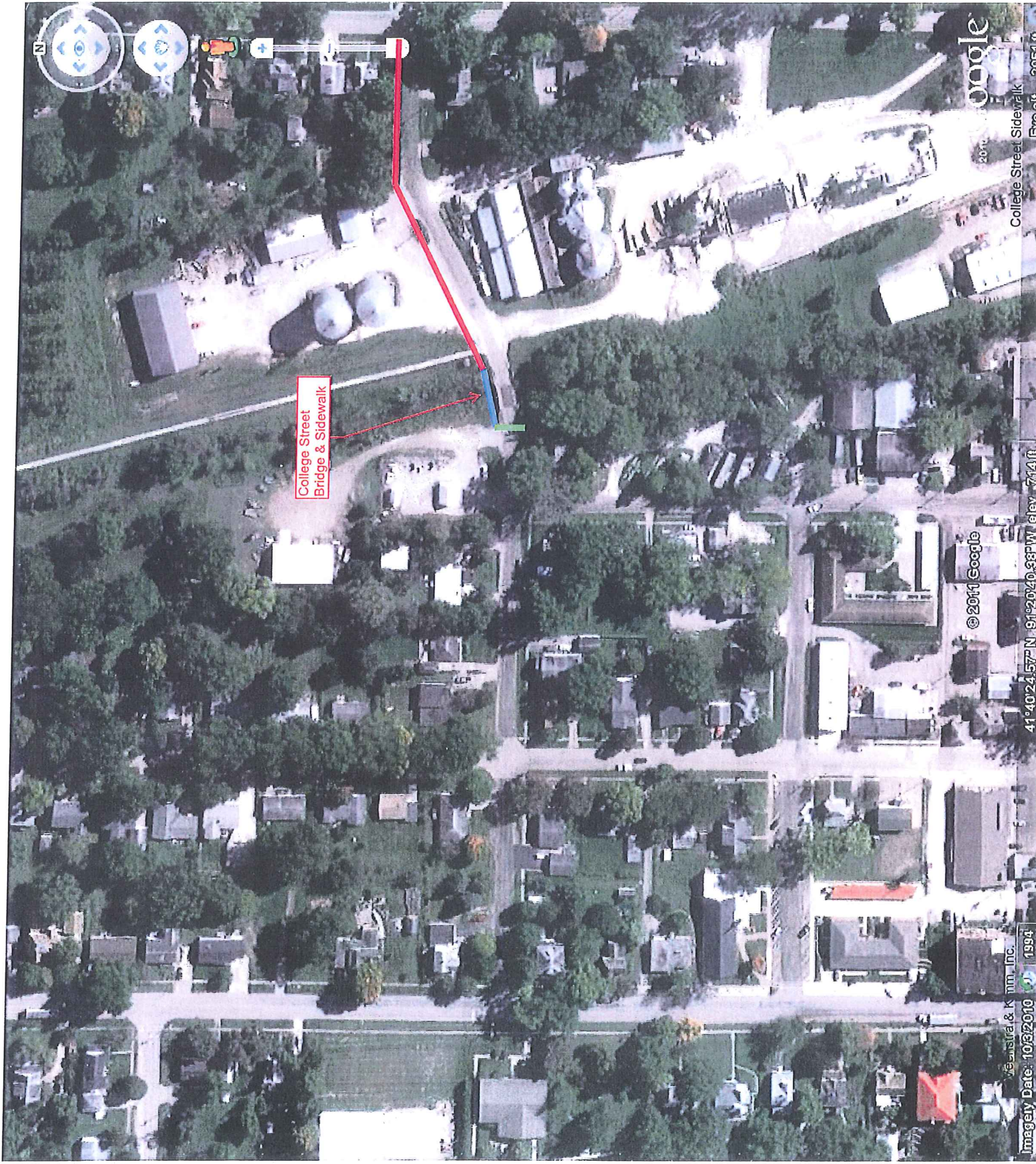
© 2011 Google

© 2010 Google

Imagery Date: 10/3/2010 11:19:54

41°28'29.14"N 91°07'47.17"W Elev: 525.0





College Street
Bridge & Sidewalk

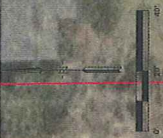
© 2011 Google

College Street Sidewalk
Eye alt 2051 ft

© 2011 Google

41°40'24.57\"/>

Imagery Date: 10/2/2010
© 1994



DATE		REVISIONS		SCALE		AS NOTED		VERIFY SCALE		VEENSTRA & KIMM, INC.		ORANGE STREET SIDEWALK		PROJECT	
				DRAWN	DPS	DATE	BY	BY	BY	BY	VEENSTRA & KIMM, INC.	West Branch Iowa		1	
				CHECKED	MM			DATE	BY	BY	860 22nd Avenue 319-465-1000	860 22nd Avenue 319-465-1000		860 22nd Avenue 319-465-1000	
				APPROVED	MM			DATE	BY	BY	860 22nd Avenue 319-465-1000	860 22nd Avenue 319-465-1000		860 22nd Avenue 319-465-1000	
				DATE	MM			DATE	BY	BY	860 22nd Avenue 319-465-1000	860 22nd Avenue 319-465-1000		860 22nd Avenue 319-465-1000	
				ISSUED FOR	ESTIMATE						860 22nd Avenue 319-465-1000	860 22nd Avenue 319-465-1000		860 22nd Avenue 319-465-1000	



West Branch
Iowa
860 22nd Avenue
319-465-1000

ORANGE STREET SIDEWALK

1

PROJECT

PLOTTED

FILE PATH



DATE	REVISIONS	SCALE	AS NOTED	DATE	BY

VERIFY SCALE
 BAR IS ONE INCH ON ORIGINAL DRAWING. IF NOT ONE INCH ON SCALE, ACCORDINGLY.



West Branch
 Iowa
 660 2nd Avenue
 215-462-1000 • 215-462-1008 FAX • 800-541-6011/1713

PROJECT
 1

POPLAR STREET SIDEWALK

DWG. NO.
 1

PLOTTED


FILE PATH



DATE	REVISIONS	SCALE	AS NOTED	VERIFY SCALE	 VEENSTRA & KIMM, INC.	West Branch Iowa 850 22nd Avenue • Suite 101 • Carlisle, Iowa 52411-1555 319-462-1000 • 319-462-1000/FAX • 800-541-6011/WATS	DWG. NO. 1
				BAR IS ONE INCH ON PLAN IF NOT ONE INCH ON PLAN SCALE AS SHOWN SCALE AS ACCESSIBLE			

OLIPHANT STREET SIDEWALK



DATE	REVISIONS	SCALE	AS NOTED	VERIFY SCALE	 VEENSTRA & KIMM, INC.	West Branch Iowa 660 22nd Avenue • Suite 4 • Coralville, Iowa 52241-1565 319-466-1000 • 319-466-1000/FAX • 888-241-6001/TEXT	COLLEGE STREET SIDEWALK	DWG. NO.	1
DRAWN CHECKED APPROVED DATE ISSUED FOR	DWS HMM HMM DATE ESTIMATE	ORIGINAL DRAWING IF NOT ONE INCH ON THIS SHEET, ADJUST TO THIS STANDARD	WEST BRANCH IOWA	PROJECT					

PLOTTED

FILE PATH



DATE		AS NOTED		SCALE		VERIFY SCALE		PROJECT	
								GREENVIEW SIDEWALK	
								DIVG. NO. 1	
								PROJECT	
								WEST BRANCH IOWA	
								860 22nd Avenue • Suite 4 • Coralville, Iowa 52241-1565	
								315-465-1000 • 315-465-1000FAX • 888-241-4001(MATS)	
								VEENSTRA & KIMM, INC.	
								V&K VERIFY SCALE BAR IS ONE INCH ON ORIGINAL DRAWING. IF NOT ONE INCH ON SCALE ACCURACY, ESTIMATE.	

PLOTTED:

FILE PATH: